

# Push button



AD22-22MSB



AD22-22MSB2



AD22-22MSB3



AD22-22SD1



AD22-22SD2



AD22-22SD3

## Push button

### Indicator Lamp Series

1. Brief Introduction of Push button:

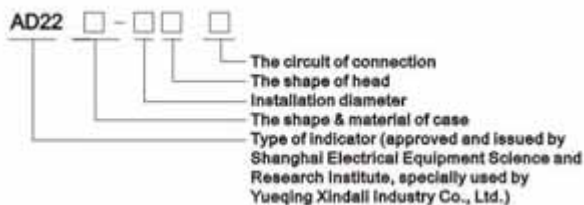
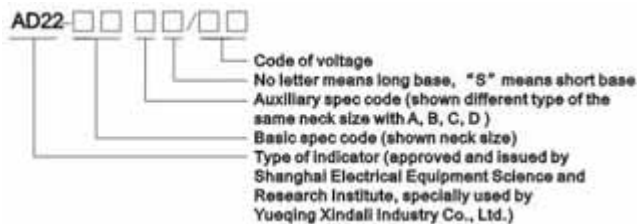
AD22-22-25-16(LED) and AD22-22-25-16-12 series of indicator is equally used LED shining chip as light source. Because of long life, low consumption, small volume and light weight, It is a product replaced the older

kind of incandescent lamp and indicator of neon lamp by new ones. AD22-25, AD22-22 and AD22-16 indicators are produced by our factory enjoying following characters; high brightness, good reliability beautiful shape and careful manufactured. Products are well praised by lots of clients. In order to fit in with top quality and aesthetic demand of user, we develop AD22-22B, C, D, E, G, H double-color lamp, position indicator, shining buzzer and miniature short indicator, as well as design shape of polycarbonate with high intensity and enjoying better anti-surge performance, and bolt-type connector designed will make it safer and more convenient. All improvement will be provided to make your choice more convenient and your design perfect.

## 2. Push button usage:

AD22 series of indicators are used as indicating, foretelling, accident and other signals in the lines of equipment (such as electrical power, telecommunication, machine tool, watercraft, textile, printing and mine machinery, etc).

## 3. Type of Push buttons:



## 4. Applicable environment of push button:

- (1) Surrounding temperature:  $-25^{\circ}\text{C}$ — $+55^{\circ}\text{C}$ .
- (2) Relative humidity:  $\leq 98\%$ .
- (3) It can normally work under following conditions; Vibration frequency is 2-80Hz and accelerated speed is 0.7g/h.
- (4) Pollution grade: 3; Installed sort: 111.
- (5) It is possible to work under the moist tropical environment if there is a "TH" sign.

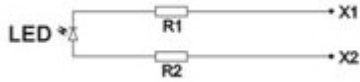
## 5. Main technical target

- (1) Voltage of working frequency: 2.5kV (AD valid value), 1min.
- (2) Insulated resistance  $\geq 2\text{M}\Omega$
- (3) Voltage wave allowed by AC indicator  $\pm 20\%$
- (4) Continual working life  $\geq 30000\text{h}$

- (5) Brightness  $\geq 60 \text{cd/m}^2$
- (6) Index of leak  $\text{CT}1 \geq 100$
- (7) Protection grade is IP40, and it is possible to be made up to IP67
- (8) Using frequency: AC 50-60Hz

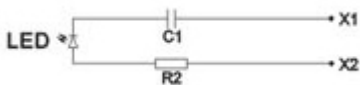
6. Circuit Introduction of push button

(1) AC and DC indicator (DC/AC 6V~220V)

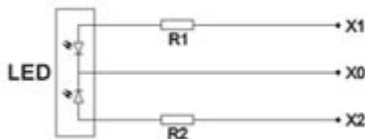


Note: It should be considered radiating condition when DC is up to 110V, 220V and 380V, for there is a great deal of heat.

(2) AC indicator (AC 220V, AC 380V)



(3) Return of double-color indicator (DC, AC 110-220V)



7. Parameters of push button, contrast list of voltage, current and code:

Voltage Code	21	22	23	24	25	26	27	28	29	30	31	32
Supply Voltage	AV.DC							DC	FD		AC	
Voltage	6V	12V	24V	36V	48V	110V	127V	220V	380V	500V	220V	380V
Current	140	72	18-72	18	18	16	16	12	12	12	16	17

Note: "FD" in the list means a discharging lamp can be installed on the cupboard of capacitor.

PG denotes pure green, PB denotes pure blue, PW denotes pure white